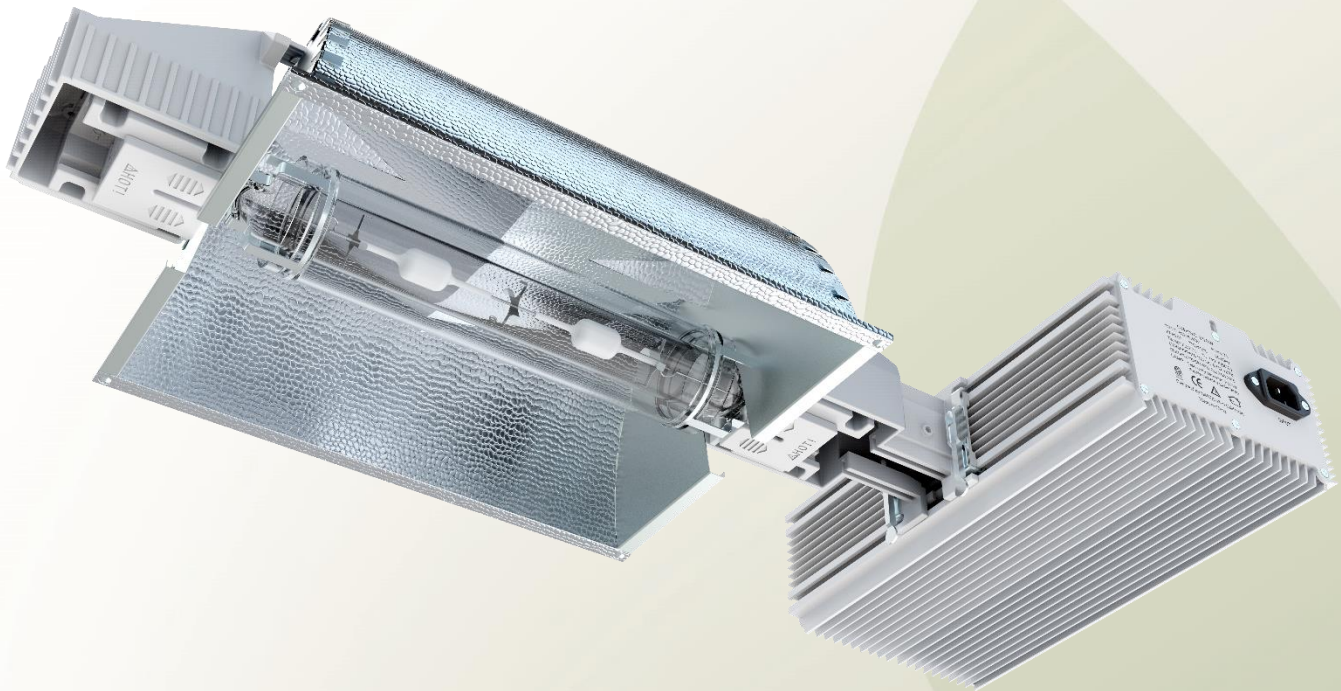


# CMH 1000W FIXTURE

- Designed for ~5' on center spacing commercial overlap light grid
- Soft & Random start plug and play technology
- Lowest profile fixture DE fixture on the market
- Uses MaxPar 1000W CMH lamps in both 3K and 4K
- 4 dimming modes and wireless NCCS & wired 0-10V ready
- 208V-240V/277V



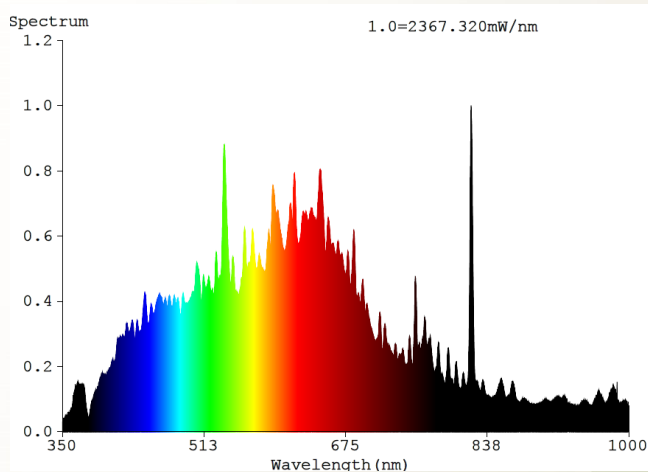
Ceramic Metal Halide or CMH for short (some refer to it as CDM), is becoming more popular in the horticultural industry. The CMH lamps have a very broad light spectrum which is more similar to the sun itself than any other form of HID lamp. We have taken CMH technology and increased its operational efficiency, making the most comprehensive spectrum of light output for an HID fixture even better. The CMH lamps also have increased efficiency in PAR/Watt compared to other forms of HID lighting.

This was the first 1000W CMH fixture on the market. Nanolux helped develop the dual arc tube 1000W CMH MaxPar Lamp. The ballast is a low frequency ballast designed specifically to run low frequency CMH arc tubes. This fixture can be used as a standalone flowering fixture. The reflector is optimized and photometrically designed for an even commercial overlap pattern with a 136° aperture.

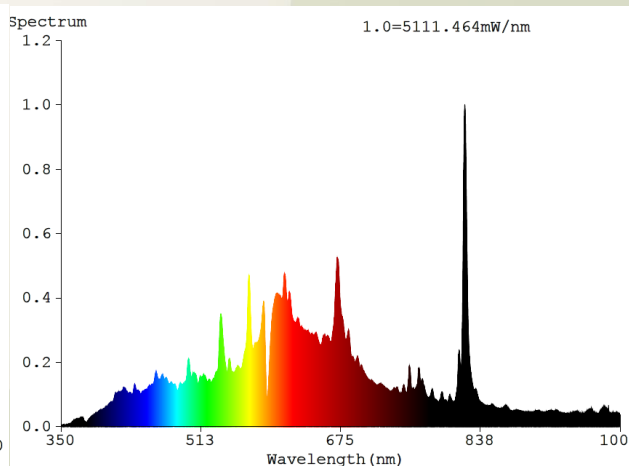
# CMH 1000W FIXTURE



Input Voltage	208V-240V
Output Voltage	200V-260V
Input Frequency	50/60Hz
Output Power	1000W Max
Output Frequency`	260Hz
Power Factor	≥0.99
Crest Factor	≤1.7
THD	≤10%
Dimming	500W,750W,875W,1000W
Strike Lamp	1000W Double Ended Ceramic Metal Halide Lamp * Use only Maxpar 1000W double jacketed CMH lamp with this fixture
Protection Function	Over Temperature Protection; Under Voltage Protection; Open/Short Circuit Protection;
Size (L*W*H)	670*305*120mm 26.4*12.0*4.7inch
Weight	6.6 kgs 14.6 lbs



CMH 1000W 4K  
1642 umol  
91.6 CRI



CMH 1000W 3K  
1688umol  
96.6 CRI

0-10V CONTROL COMAPTIBLE

NCCS APP WIRELESS COMPATIBLE