

660W



1030W

SPECTRO

THE NEW GENERATION

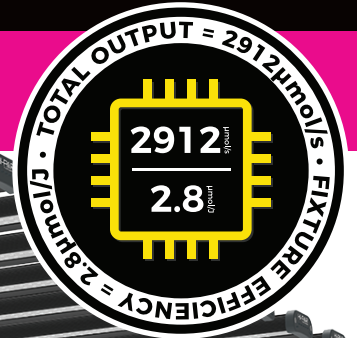


HI-PAR™
PLANT EMOTION

XLED
www.hi-par-horticulture.com

1030X SPECTRO

NEW POWERHOUSE LED REVOLUTION



HI-PAR 1030X SPECTRO LED is a powerhouse of extreme horticultural lighting! 1030w of next generation full-spectrum diodes deliver incredible photon quality and quantity to your crops. HI-PAR 1030X SPECTRO LED is ultra high efficiency, designed for effective vegetative and floral growth. Spectro X LED are built for high performance horticulture, and compatible with the HI-PAR Control Station V2.

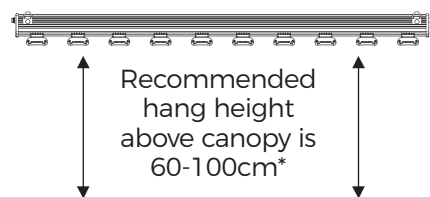
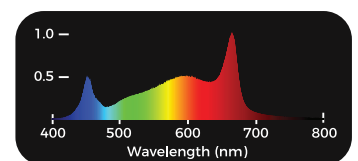
Technical Specifications:

- LUMLED white ($3.3\mu\text{mol/J}$) and Osram red ($4.24\mu\text{mol/J}$) Chips
- Coverage: up to 1.8 x 1.8m
- 10 x Interchangeable clip-on LED bars
- Dimensions: 1119.6 x 1065 x 81.5mm
- Dimmable 25%, 50%, 75% & 100%
- Compatible with HI-PAR Control Station V2
- Remote dimmer included
- Passive cooling (no fans)
- 50,000 hour lifespan
- IP65 Tested and approved
- Easy to use - plug 'n' play
- 3 year warranty

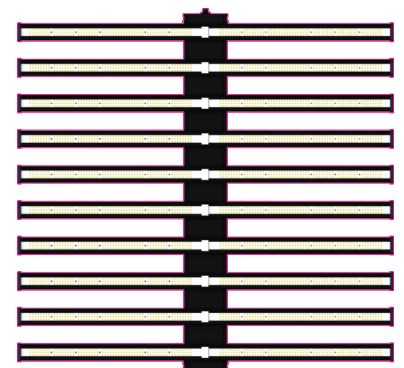
Performance - Efficiency and product data

Model	PPF $\mu\text{mol/s}$ (tested at 22°C)	Fixture Efficiency $\mu\text{mol/J}$ (Power 1030W)	Input Power (W)	Maximum Current @240V(A)	Power Factor (COS θ)	Working Voltage (V)	Supply Frequency (Hz)	Light Angle (°)	Net Weight (kg)
HP1030 LED	2912	2.8	1030	4.55	.95	120-277	50/60	120	14

Spectrum



* This is only a recommendation. HI-PAR accept no responsibility for user error.



1119.6 x 1065 x 81.5mm

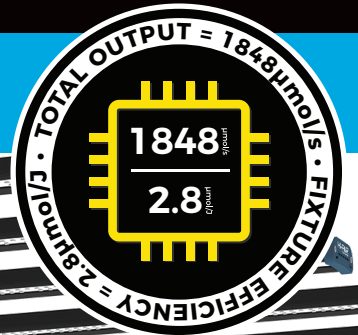
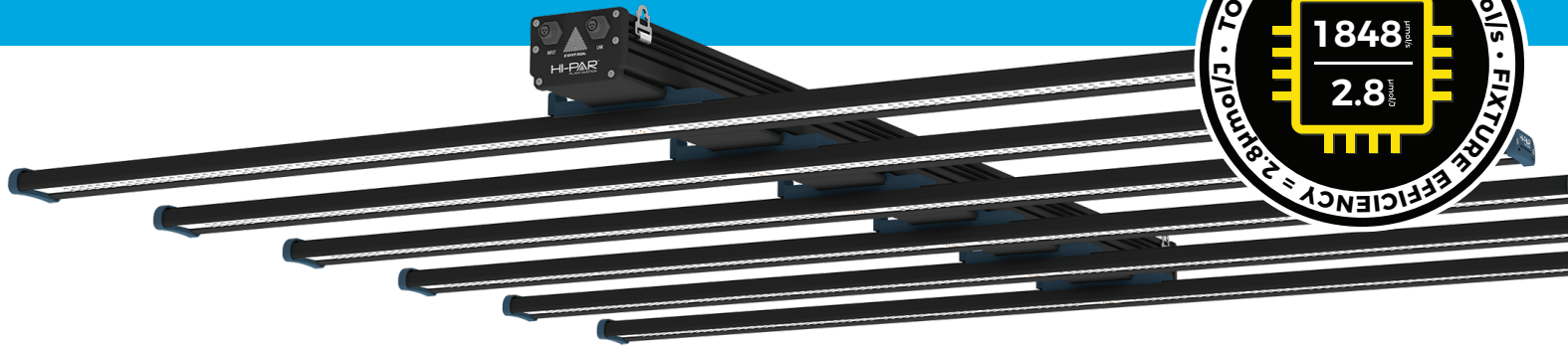
MORE LIGHT, MORE FLOWER

MAXIMUM LIGHT OUTPUT



660X SPECTRO

NEXT GENERATION LED DIODES



HI-PAR 660X SPECTRO LED is our latest innovation in advanced agricultural lighting. A powerful 660w of next-generation, true full-spectrum LED diodes with durable performance drivers. **HI-PAR 660X SPECTRO LED** is built for quality and quantity yields in all protected cropping applications. Effective in both vegetative and floral growth. Spectro X LED are built for supercharged horticulture, and compatible with the **HI-PAR Control Station V2**.

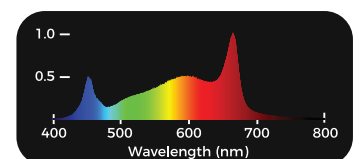
Technical Specifications:

- LUMLED white (3.3 $\mu\text{mol/J}$) and Osram red (4.24 $\mu\text{mol/J}$) Chips
- Coverage: up to 1.5 x 1.5m
- 6 x Interchangeable clip-on LED bars
- Dimensions: 1119.6 x 1066 x 71.1mm
- Dimmable 25%, 50%, 75% & 100%
- Compatible with HI-PAR Control Station V2
- Remote dimmer included
- Passive cooling (no fans)
- 50,000 hour lifespan
- IP65 Tested and approved
- Easy to use - plug 'n' play
- 3 year warranty

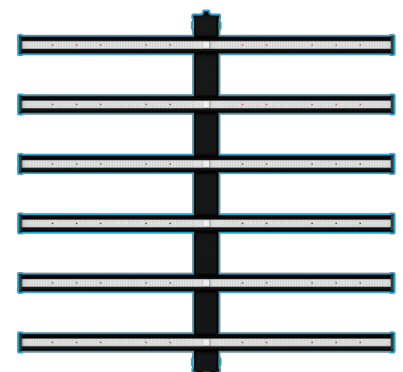
Performance - Efficiency and product data

Model	PPF $\mu\text{mol/s}$ (tested at 22°C)	Fixture Efficiency $\mu\text{mol/J}$ (power 660W)	Input Power (W)	Maximum Current @240V(A)	Power Factor (COS θ)	Working Voltage (V)	Supply Frequency (Hz)	Light Angle (°)	Net Weight (kg)
HP660 LED	1848	2.8	660	2.99	.95	120-277	50/60	120	8.8

Spectrum



* This is only a recommendation.
HI-PAR accept no responsibility for user error.



1119.6 x 1065 x 71.1mm

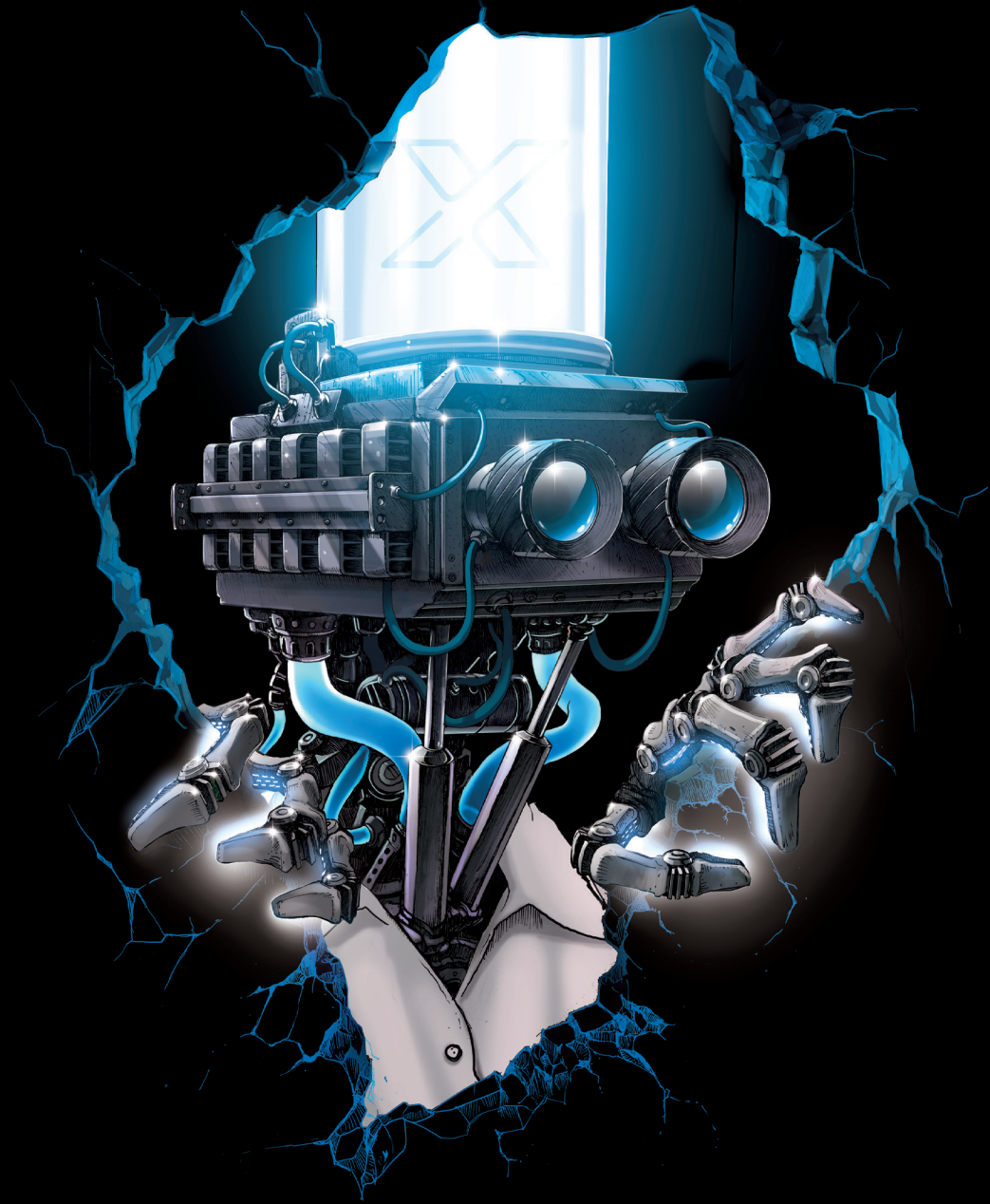
LESS POWER, MORE FLOWER

NEW IMPROVED VERSION





SPECTRO



HI-PARTM
PLANT EMOTION

www.hi-par-horticulture.com