

PURPL PRO QUICK START GUIDE

Cue the happy dance, your Purpl PRO is here!

In this guide, we've included all the instructions you'll need to get your Purpl PRO up and running. And if you do get stuck, go to purplhelp.com for more help!

WHAT'S INCLUDED IN THE PURPL CASE?



PURPL PRO

THE STAR OF THE SHOW



CALIBRATOR

WHITE PUCK LOCATED BEHIND THE BENCH, UNDER THE REMOVABLE COVER, THE CALIBRATOR ENSURES ACCURATE MEASUREMENTS



SAMPLE HOLDER + CAP

HOLDS YOUR FLOWER SAMPLE



CHARGING CORD

USB-C CABLE TO CHARGE YOUR PURPL PRO



CLEANING BRUSH

KEEPS YOUR GRINDER AND SAMPLE HOLDER CLEAN BETWEEN USES



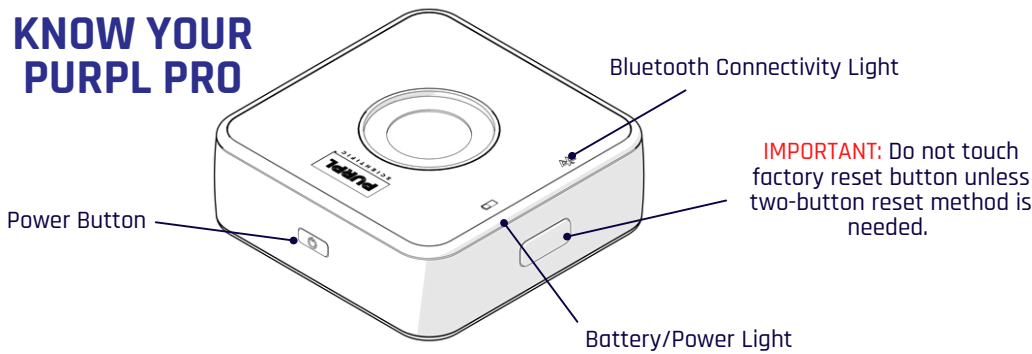
GRINDER + FUNNEL

USED TO GET YOUR SAMPLE PREPPED & READY TO BE TESTED

FLIP THIS PAGE OR SCAN FOR QUICK START INSTRUCTIONS



KNOW YOUR PURPL PRO



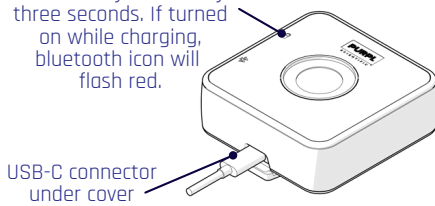
IMPORTANT: Do not touch factory reset button unless two-button reset method is needed.

NEED MORE HELP?
SCAN FOR PURPL
SUPPORT



1 CHARGE DEVICE

While charging, battery icon blinks yellow every three seconds. If turned on while charging, bluetooth icon will flash red.



First, charge your device using the charging cord behind the case insert. You can use the device while it's charging. Full charge will be reached after 3 hours and battery light will turn solid green.

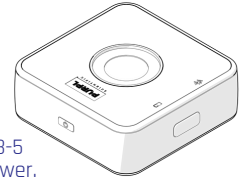
2 DOWNLOAD APP



Use your phone camera to scan the qr code or search 'Purpl Pro' on the Apple App Store or Google Play Store.

3 TURN ON/OFF

When ON, lights flashes every 3 seconds. Bluetooth light will flash red.



Press and hold for 3-5 seconds to toggle power.

Both lights flash blue when powering on, red when powering off.

Press the power button once to check battery level.

GREEN = CHARGE > 50%
ORANGE = CHARGE IS 20% TO 50%
RED = CHARGE < 20%

4 CREATE ACCOUNT

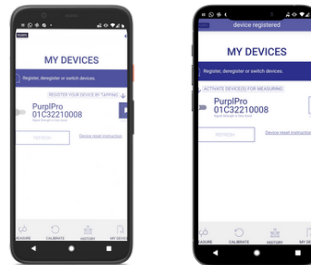
Click Register. Notice that the Log In button has changed to a Register button.

Remember to save your email and password, they are used for device registration and portal access.



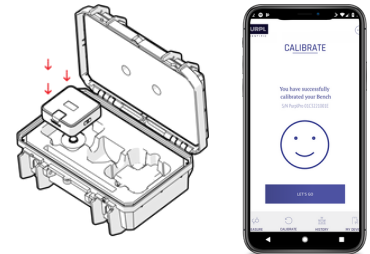
Enter a working email address and a password. Go to your email, find your verification email, and click to verify.

5 REGISTER DEVICE



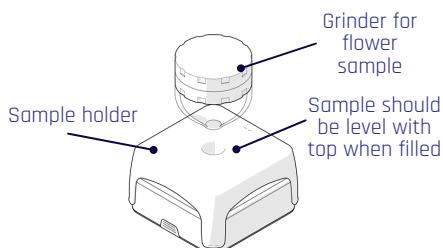
Go to the My Devices tab, and tap the Register button on the right. Activate the device for measurement by tapping the toggle switch to the left of the device serial number.

6 CALIBRATE



Remove black calibration cover, you may need to use some force, place glass down over calibration cartridge & fully press into place. Next, tap calibrate on the app.

7 MEASURE



Place black sample holder over the Purpl Pro, using SLX grinder, grind your flower sample into the sample holder.

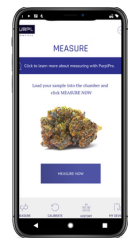
8 MEASURE (CONT)



Once filled, place cap back over sample holder. on your purpl pro app, tap measure.

9 RESULTS

Post your sample results on Instagram and tag @purplscientific!



Enter a name & note for the sample. Tap "Save to DB" to save your measurement in the user portal. Login with your Purpl username/password.