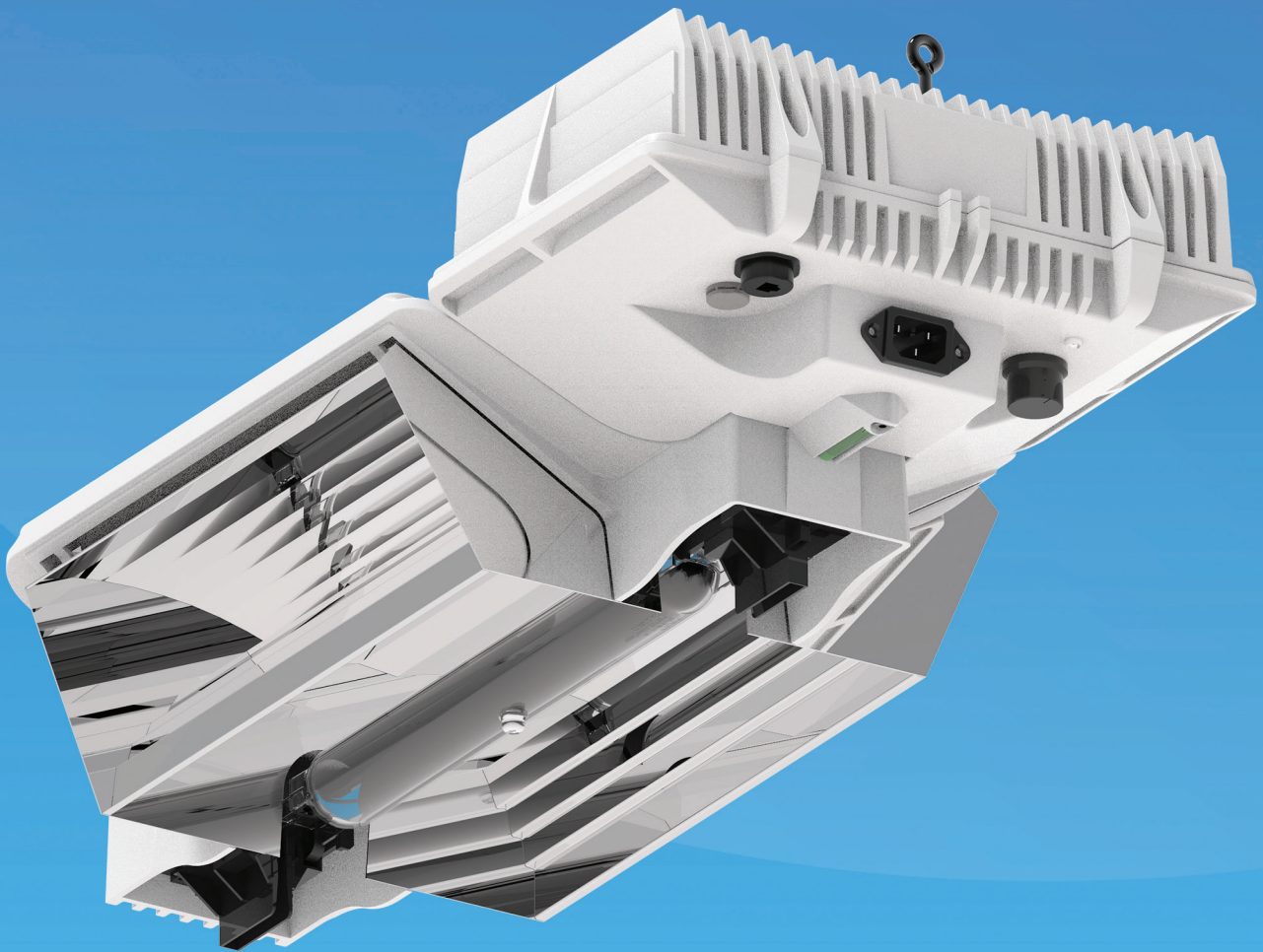




# DLI JOULE Series 1000W

## Instruction Manual



## Preparing the fixture for first installation

- Carefully take the fixture out of the packaging.
- Check whether the reflector is fitted correctly.
- Check whether the lamp is fitted correctly into the lampholder. Make sure the product stamp of the lamp is on the ballast side. Make sure the lampholders are in the closed position.
- Make sure the dimming button is set to 1000W.
- Fix the two eyebolts onto the fixture. One on the front end of the fixture. The other on the back end of the ballast housing.
- These eyebolts can be used for mounting the fixture. Ask your shop for the other mounting solutions created by DLI.
- If you are using the fixtures in combination with the DLM-4 Zone controller, then please read the instructions of the controller now first.
- Connect the power cable to the IEC connector on the back end of the fixture.
- Make sure the mains is switched off before connecting to the mains. Once you've properly connected the fixture to the mains it's safe to switch the power on.

❗ **ALWAYS MAKE SURE THE POWER IS SWITCHED OFF BEFORE HANDLING THE DLI 1000W FIXTURES.**

- Disconnect the mains first **Wait at least 30 minutes before replacing or touching the lamp. The lamp can be very hot!**
- Open the lampholders by sliding them outward. Place the lamp into the lampholders until the lamp is held by the metal spring on both ends of the lampholders. Make sure you hold the lamp while the lamp holders are open to prevent the lamp for falling out.
- Close the lampholders by sliding them inward.

❗ **MAKE SURE BOTH LAMP HOLDERS ARE COMPLETELY CLOSED!**

If the lamp was replaced without disconnecting the mains, the ballast needs to be reset by disconnecting the mains. The lamp will not start. Also this is very dangerous. The lamps can be cleaned by using DLI cleaner. **Do not** use detergent!

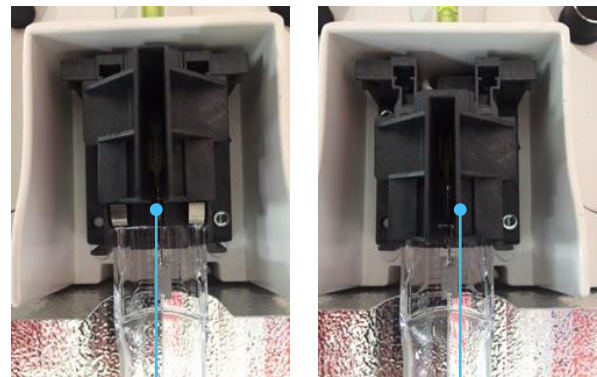
## Installation and replacement of the lamp

The DLI 1000W fixtures are used in combination with DLI 1000W Electronic high frequency Double Ended lamps. The use of other types of lamps will damage the fixture.

The 1000W Double Ended lamps that are supplied with the DLI 1000W fixtures should be handled with thin gloves or a dry cloth. Avoid fingerprints on the lamps, the grease/dirt of your fingers will burn into the glass.

**\*The lamps can be cleaned by using DLI cleaner. Do not use detergent!**

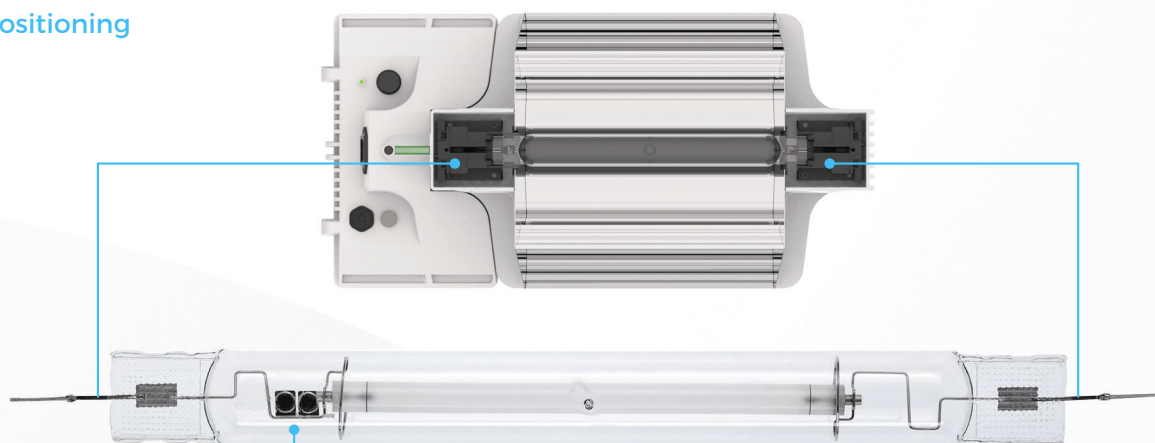
It is important that the lamp is fitted correctly in the fixture. The product stamp on the outer bulb of the lamp should be on the ballast side of the fixture. The triple capacitor should be placed away from the ballast. **The lamp will not ignite when the lamp is not placed correctly into the lamp holders.**



Open

Closed

## Lamp Positioning



⚠ **PRODUCT STAMP ON OUTER BULB**

## ! READ THESE INSTRUCTIONS CAREFULLY BEFORE FIRST INSTALLATION

### Introduction

Thank you for buying the DLI JOULE-Series 1000W DE fixture, the most efficient - and compact fixture available in the market. The DLI fixture is made with high quality components to assure a long life and a safe operation.

For a correct installation, it is important to read the Instruction manual carefully before you start with the installation of the fixture(s).

### Product Description

The DLI JOULE-Series 1000W DE fixture is made to grow plants. The 1000W Double Ended DLI High Frequency and High Pressure Sodium lamp is specially made for a High Frequency electronic driver.

The output of the DLI JOULE-Series 1000W DE fixture can be adjusted from 600 to 1150 W by a switch on the housing or remotely switched and adjusted by the DLM 4-Zone Controller.

For more info about the DLM 4-Zone Controller please check our web site [www.dutchlightinginnovations.com](http://www.dutchlightinginnovations.com) and see the advantages of this unique controller.

Because of the use of a flat housing, the DLI fixtures can be mounted almost straight to the ceiling with the special available mounting solutions.

### Warnings

- **Make sure the power is switched off before handling the DLI 1000W DE fixtures.**
- Make sure the power cables are connected properly.
- There are no serviceable parts inside the DLI DE 1000W housing. **Do not open** the housing of the ballast and **do not** rewire, repair or reconfigure any component of the fixture.
- This can cause serious injury or death.
- The DLI 1000W fixture is developed for growing plants in indoor locations. **Do not** use these fixtures in a wet environment or outdoors. The temperature in the rooms in which the fixtures are used should not exceed a temperature of 104°F or 40°C and a relative humidity of 70%.
- **Do not** use the DLI 1000W fixture in the proximity of dangerous or combustible materials.
- Make sure that the power cord does not touch any hot parts of the fixture
- After the lamp is switched off, wait at least 15 minutes before restarting the lamp.
- **Do not** plug or unplug a lampcord or cable while the fixture is in operation
- **Do not** make contact to the lampholders/socket while the power is switched on
- **Do not** plug the fixture into a supply voltage other than instructed on the housing of the fixture/ballast.
- This fixture operates at very high temperatures. Please keep away from children and pets. **Do not** hang it too close to your plants, because you will burn them.
- Never use the fixture without reflector and lamp

### Technical specifications: DLI 1000W DE 120-240V

Input Voltage:	120 ~ 240V
Input Voltage Range:	± 10%
Rated Power:	1060W
Dimming with switch:	600W - 750W - 825W - 1000W - 1150W
Dimming with controller:	600W - 1150W
Frequency:	50/60 Hz
Typical Current:	4.5A @ 240V/1000W
Maximum Current:	9.5A @ 120V/1150W
Inrush Current:	≤ 40A
Power Factor:	≥ 0,98
Dimensions:	571 x 284 x 178mm 22.5 x 11.2 x 7.0 inch
Weight:	5.4 kg 11.9 lbs

### DLI 1000W DE 277-347V

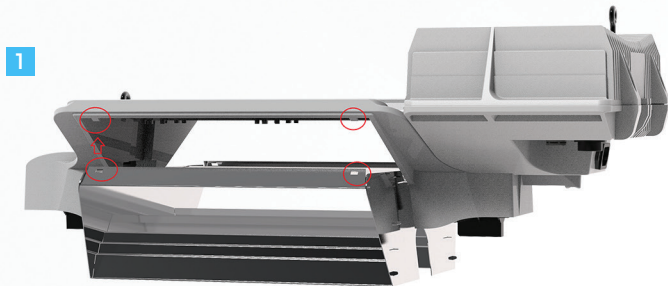
Input Voltage:	277 ~ 347V
Input Voltage Range:	± 10%
Rated Power:	1060W
Dimming with switch:	600W - 750W - 825W - 1000W - 1150W
Dimming with controller:	600W - 1150W
Frequency:	50/60 Hz
Typical Current:	3.8A @ 277V/1000W
Maximum Current:	4.2A @ 277V/1150W
Inrush Current:	≤ 40Av
Power Factor:	≥ 0,98
Dimensions:	571 x 284 x 178mm 22.5 x 11.2 x 7.0 inch
Weight:	4.6 kg 10.2 lbs

All fixtures are  
CSA certified

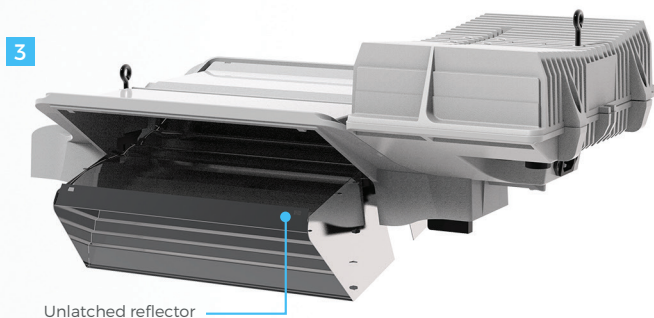
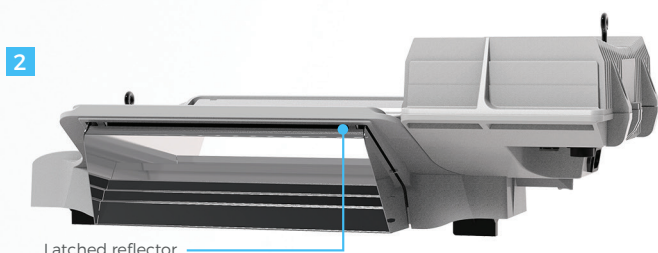


## The Reflector

To replace the reflector, make sure the lamp and reflector are cooled down. Remove the lamp first. The reflector is held by 4 holding pins on the sides of the reflector cover (image 1).



The reflector can be taken out by carefully unlatching the top of the reflector from the holding pins in the reflector cover (image 2 and 3).



## Usage of the dim switch button

The output of the lamp can be regulated by the dim switch on the bottom of the fixture. The typical output of the lamp is 1000W, but it can be adjusted to 600W, 750W, 825W, 1000W and 1150W by putting the switch to the required output setting. Dimming can be done during operation of the fixtures.

The fixture is equipped with soft-dim which gradually changes the output to the new setting. This takes 60 seconds per step.

Before you dim or boost your DLI 1000W DE lamp, make sure that you have run it at least for 100 hours at nominal level (1000W) to stabilize the lamp.

## Usage of the controller

The dim-switch can also be set to controller. This should be done when the DLI DE 1000W fixture is connected to the DLI Controller. Please read the instructions of the DLI Controller first before connecting the fixtures to the DLI Controller.

## LED indicator

The LED indicator on the bottom of the DLI DE 1000W fixture shows the status of the fixture.

- LED constantly blinks slowly: Warming up (no action required)
- LED constantly on: Normal operation (no action required)
- LED constantly off: No supply voltage or fixture defect (check supply voltage)
- LED constantly blinks fast: Lamp defect (replace lamp)
- LED constantly blinks on - on - off: Voltage range not within specs (check supply voltage)

## Hanging distance

You need at least 3 foot or 90 cm distance between the fixture and the plants. To check the height, place your hand (palm down) over the plants. If your hand got too warm, you need to move the lamp higher because than it is also too hot for your plants and you will burn them.

## Warranty

Dutch Lighting Innovation only uses high quality components. Under normal operating conditions, the mechanical and electronic components are covered by a three-year warranty from the original date of purchase. For service return the fixture in the original packaging to your shop with the original sales receipt.

Components that are excluded from warranty are components that have failed due to abnormal usage.

In the case of defects of the DLI JOULE-Series 1000W DE fixture, the fixture will either be replaced or repaired using new or reconditioned products or parts. If the fixture will be replaced this limited warranty shall apply to the replacement product for the remaining initial warranty period, i.e. (three) 3 years from the date of purchase of the original product. The 1000W DE lamps are covered by a one year warranty from the original date of purchase. Lamps broken due to abnormal usage or thermos shock are excluded from warranty .

## Returns

All returns need to be done in the original packaging in order to avoid damages of the product during transport.