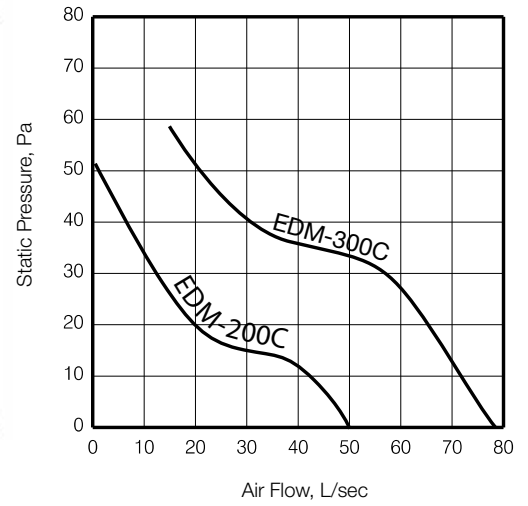




EDM-300C



Includes a high quality mechanical backdraft shutter that prevents outside air coming into building when the fan is switched off.



EDM

WALL MOUNTED EXHAUST FAN



Whether wall or ceiling mounted, the EDM exhausts stale and moist air from homes and commercial buildings. The robust mechanically driven backdraft shutter prevents dust from entering building even when switched off. This makes it ideal for homes and on-site offices in harsh conditions.

- Made from tough injection moulded plastic.
- Internal thermal motor cut out protection.
- 300 model features a slim line body.

BULK OPTION FOR EDM-300C

- Available in plain carton only.
- Minimum order quantity of 10.
- Product code: EDM-300C-BULK.

ACCESSORIES

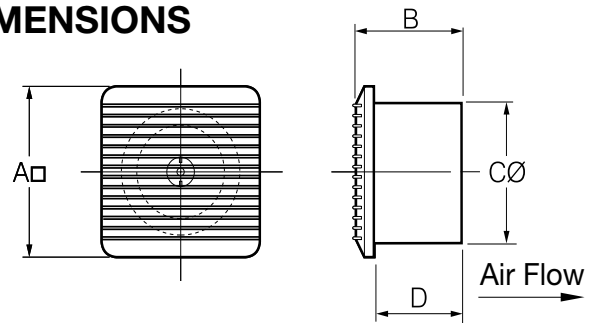
- External Grilles.
- Flexible Duct - Fire Rated AS/NZS 4254.
- Wall Tubes.

SPECIFICATIONS

MODEL NO.	BACKDRAFT SHUTTER	M ³ /HR [†]	L/SEC [†]	FAN SPEED RPM	AVG. dB(A) @ 3M	WATTS	VOLTS	IP RATING
EDM-200C	YES	180	50	2520	36	25	220-240	IP44
EDM-300C	YES	280	78	2200	41	35	220-240	IPX4

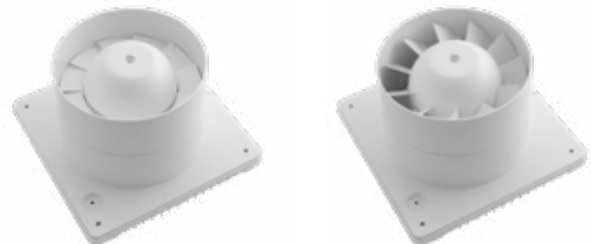
[†] Air flow without duct and fittings

DIMENSIONS



MODEL NO.	DUCT SIZE	A	B	CØ	D
EDM-200C	125	187	109	119	62
EDM-300C	150	200	129	148	104

All dimensions in mm



The EDM's electric shutters operate using wax motor technology. The wax pot is a paraffin-filled cylinder designed to open and close the shutter with a smooth and gentle action. This reduces noise and ensures faultless operation every time.

*Conditions apply. For details visit: fantechtrade.com.au/warranty