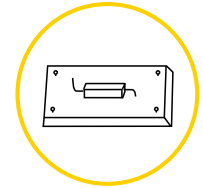
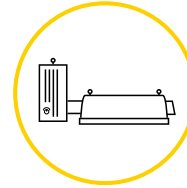
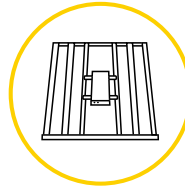


**Telos Growcast™ is a unique lighting controller adaptor that allows customers to add Telos Mesh wireless Bluetooth control technology to hundreds of compatible LED and HPS grow lights.**



- Compatible with of LED and HPS lighting fixtures from leading manufacturers.
- Wirelessly set exact light output levels with Precise PPF™.
- Program 24hr on/off timing schedules with option sunrise and sunset feature.
- Daisy chain up to 50 lights to a single Growcast™.
- Securely connect and control Growcast™ Controllers using the Telos Mesh App for Android and iOS.



## Technical Specifications

Connection Interface	LLT Connector + RJ11 and linking adaptors
User Interface	Smart-phone app or manual control via touch sensor
Dimming Range	10-100% & Dim to off
Dimming Protocol	1-10v or PWM
Input Power	USBC cable or 12v supply (From LED driver)
Wireless Technology	Bluetooth Mesh version 5.3
Control App	Telos Mesh
App Availability	Android and iOS
Ingress Protection	IP66
Dimensional Data	32 x 32 x 22mm
Weight	80g
Cable Length	250mm
Manufacturer's Warranty	2 years



## Growcast Compatibility List

Check if your grow light is compatible with Telos Growcast.

Note: Some lights that are not listed may still be compatible, please contact Telos.

✕ ▼

Lighting Brand	Brand Model	Compatible	Power Supply	Light Adapter	Verified Profile
Lumatek	ATS 300W	Yes	Light/AUX12V	M12 Push Lock	-
Lumatek	Lumatek 465W 2.6	Yes	Light/AUX12V	M12 Push Lock	-
Lumatek	Lumatek 465W Pro 2.9	Yes	Light/AUX12V	M12 Push Lock	-
Lumatek	Zeus 1000w Pro	Yes	Light/AUX12V	M12 Push Lock	-
Lumatek	Zeus 1000W Xtreme PPFd CO2	Yes	Light/AUX12V	M12 Push Lock	-
Lumatek	Zues 600W Pro 2.9	Yes	Light/AUX12V	M12 Push Lock	-
Lumatek	Zeus 600W 2.6	Yes	Light/AUX12V	M12 Push Lock	-
Lumatek	Zeus 600W 2.3	Yes	Light/AUX12V	M12 Push Lock	-
Lumatek	ATS 300W Pro	Yes	Light/AUX12V	M12 Push Lock	-
Lumatek	ATS 200W Pro	Yes	Light/AUX12V	M12 Push Lock	-

« < 1 2 3 > »

### Understanding the compatibility list

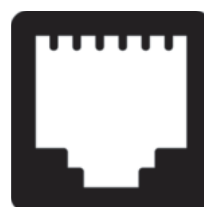
**Power supply:** The power supply column indicates whether the Growcast is powered by the selected lighting fixture (self-powered) or requires external power via the included 3m USBC cable (power plug not included).

**Lighting adapter:** Not all grow lights use the same connection interface for when connecting control gear. The most common ports are RJ11 (square) and M12 (circular). There are some special cases which require a variant of these connections which will be listed here. If you are still unsure, don't hesitate to contact Telos.

**Verified profile:** Lights with a 'blue tick' icon are verified profiles. These are profiles that have been tested and verified by Telos and contain accurate photometric data for a given light. These lights can be chosen from a dropdown menu when first provisioning the Growcast.

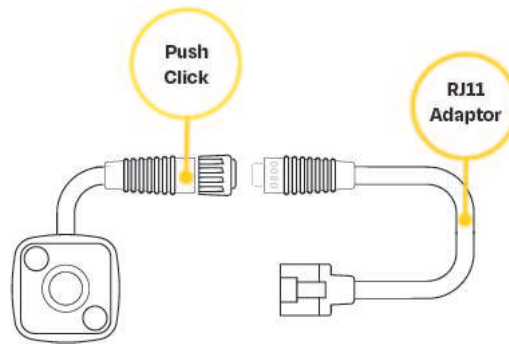
## Common Grow Light Connection Types

Different grow light manufacturers use different "dim-in" ports for their lighting designs. Traditionally most grow lights have been designed with an RJ11 port, however, many newer grow light designs use a waterproof M12 push lock connector. The Growcast has a native M12 connection, but an RJ11 adapter comes included in the box to fit either option.





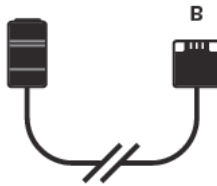
To use the included RJ11 or other non-standard lighting adapter simply push and click the adapter connectors together.



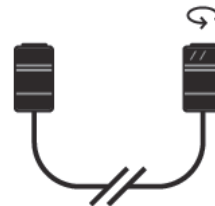
## Non-standard Lighting Adapters

Telos Growcast is compatible with many different grow lights from a wide range of manufacturers.

The included Growcast RJ11 adapter allows you to connect the Growcast to most major lighting brands. Some manufacturers use non standardised connectors for their dimming ports. We've created a range of non-standard adaptors (not included) that will allow you to connect a Growcast to these specialised dimming ports.



Growcast to RJ11 [Type B]  
(30cm)



Growcast to M12 twist-lock  
(30cm)

*Manufacturers may change the dimming connection over the lifetime of a specific model. For example, some Mars Hydro models will work with the standard RJ connection included but some older models require the RJ type 2 connector - Contact Telos for help choosing a connector type.*

## Growcast Open Source Connection info

The PDF document below details the different pin-outs for our three main lighting adapters. This data can be used to help identify which adapter is required for your grow light and also to support OEM businesses looking to integrate Growcast with their products.

Growcast Open-source Data   
(<https://www.teloslighting.co.uk/wp-content/uploads/2023/01/Growcast-Open-source-Connections.pdf>)