

# FloraMaX



## Ca-Mg-Fe

Prevents plant nutrient deficiency symptoms, especially where "high pH" waters are used

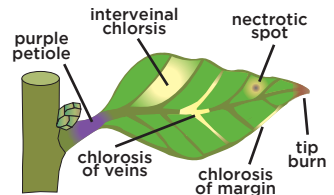
**Ca-Mg-Fe is a powerful 'cure-all' against deficiency symptoms that are common in fast growing flowering plants.**

- **Ca-Mg-Fe helps prevent or cure** leaf yellowing, leaf curl, stunted growth, withered fruit-set and bud rot.
- **Ca-Mg-Fe excels where "high pH" waters are used**, or when nutrient solutions are subject to volatile changes in pH and EC.
- **Ca-Mg-Fe helps prevent ALL "trace element" deficiencies - arguably the most common type of deficiency!** This is achieved by including all SIX\* essential trace elements at a meaningful concentration. Further, these trace elements are in an 'alkaline-stable' form, hence should pH rise above 6.5 and as high as 10, the nutrient solution's trace element component will be fully protected.

\*Iron, copper, manganese, zinc, molybdenum and boron

- **Ca-Mg-Fe complements existing base nutrients** that are simply deficient in cal-mag and essential trace elements.
- Dosage: 1-2ml/L (4-7.5ml/Gal) during veg and flower.
- Available in: 1L // 5L // 20L // 200L // 1000L

*NOTE: Avoid using Ca-Mg-Fe with VegaFlora A+B or Veg-1 as these elements are already included and an excess will likely cause complications.*



**FloraMax Ca-Mg-Fe** fights common nutrient deficiency symptoms

### TESTIMONIES

“Without Ca-Mg-Fe the growth would stall and there were all types of foliar issues like twisting and dead spots. Now our plants are fully lush all the way through!”

“With our hard water we were regularly having problems... The Ca-Mg-Fe has really helped to keep our plants strong with consistent weight and crop speed”

Analytical Chemists and Horticultural Consultants **Since 1966**

[www.floramax.com](http://www.floramax.com)

 @floramaxnutrients